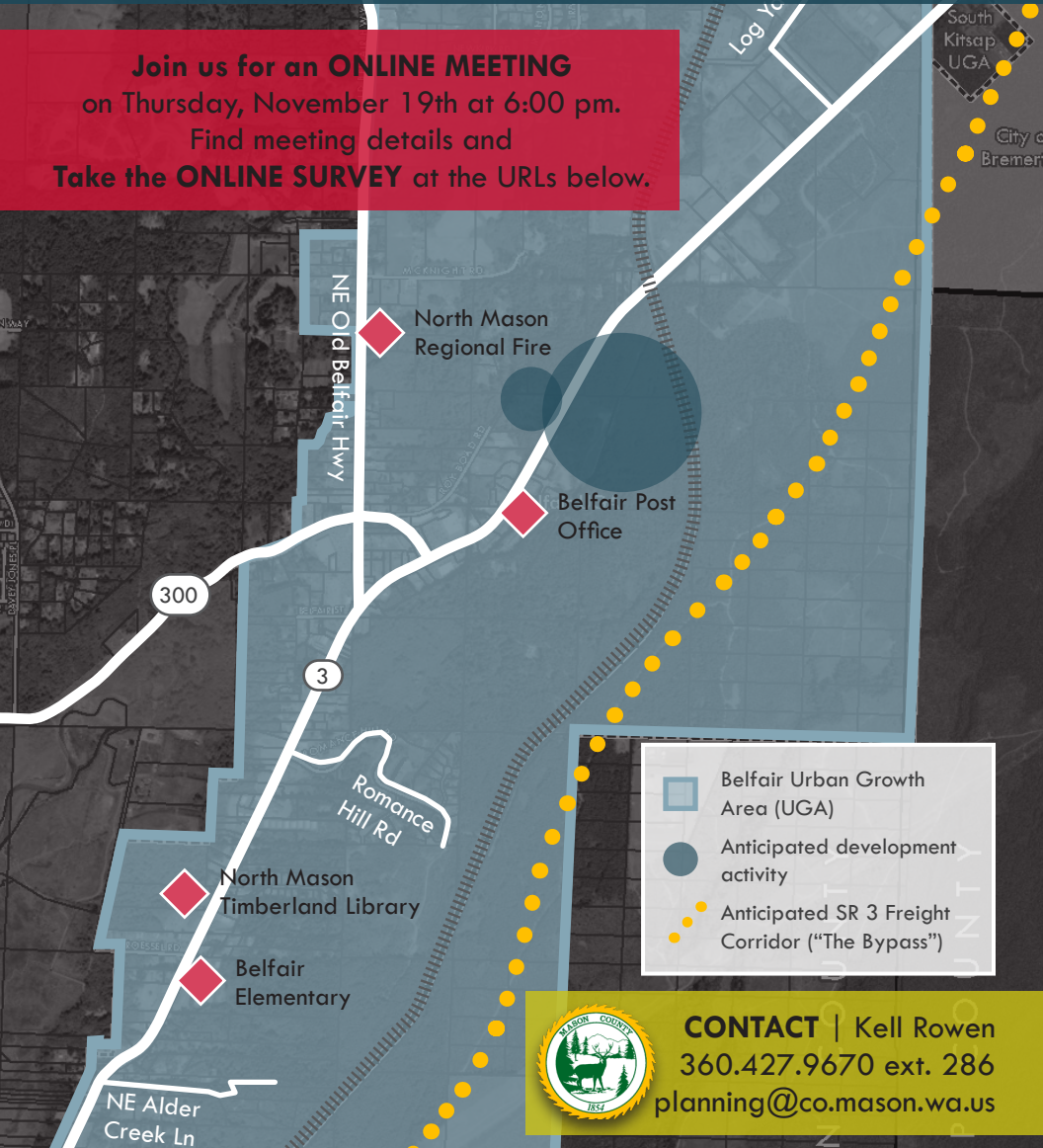


HOW SHOULD BELFAIR GROW? Recent investments will contribute to rapid growth in Belfair. In addition to the County's grant to extend the sewer system, a new freight corridor, or "bypass," is planned. We're refreshing the 2004 Belfair Plan and creating a Planned Action Environmental Impact Statement and ordinance to guide growth that reflects the community's vision for the future.

Join us for an ONLINE MEETING
on Thursday, November 19th at 6:00 pm.
Find meeting details and
Take the ONLINE SURVEY at the URLs below.



CONTACT | Kell Rowen
360.427.9670 ext. 286
planning@co.mason.wa.us

Project Website: www.co.mason.wa.us/community-services/belfair-eis
Survey: www.surveymonkey.com/r/BelfairUGA