



**MASON COUNTY**  
**DEPARTMENT OF COMMUNITY SERVICES**  
Building Division

Mason County Bldg. 8, 615 West Alder Street, Shelton, WA 98584

Shelton (360) 427-9670    Belfair (360)275-4467    Elma (360)482-5269

[www.co.mason.wa.us](http://www.co.mason.wa.us)

### Exterior (WSP)

Minimum 4'0" panel width

Maximum 12' height.

3/8" APA rated sheathing

Secure with 6d common nails

6" o.c. at edges, 12" o.c. in the field, & 6" o.c. at gable end walls.

Align vertical joints over studs.

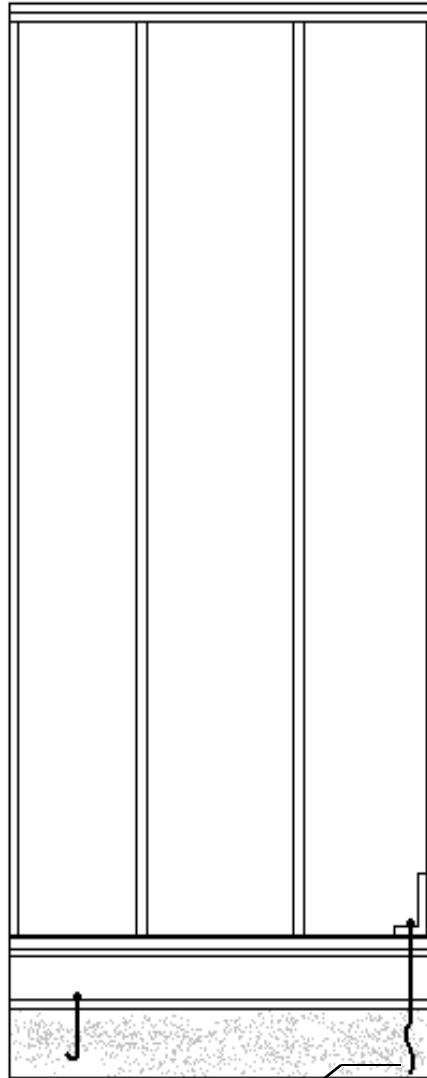
1-1/2" blocking at horizontal joints.

Extend sheathing to foundation sill plate.

Exterior braced wall lines shall have a braced wall panel located at each end of the wall line.

**Exception:** When a BWP begins no more than 10" from the end one of the following is allowed:

- (1) Exterior braced wall lines shall have a braced wall panel for Methods WSP, CS-WSP, CS-G and CS-PF is applied at each side of the building corner and the (2) 24" wide panels at the corner shall be attached in accordance with figure R602.10.7
- (2) The end of each braced wall panel closest to the corner shall have an 1800# capacity tie down device fastened to the stud at the edge of the braced wall panel closest to the corner and to the foundation or framing below. The tie down device shall be installed in accordance with manufacturer specifications.



1800# uplift capacity tie-down device. See exception #2, exterior WSP

### Interior (IWSP)

Minimum 4'0" panel width when 1/2" gypsum board installed on 2 sides of the braced wall panel.

Minimum 8'0" panel width when 1/2" gypsum board is placed on one face of the braced wall panel.

Maximum 10' height for addition heights see IRC table 602.10.5

Secure with 6d drywall nails 7" edges (including top and bottom plates) 7" field.

Align vertical joints over studs  
1 1/2" blocking at horizontal joints.

Support IBWP as specified in IRC Section R602.10.8 and R602.10.9

Interior braced wall lines shall be fastened to floor and roof framing in accordance to Table R602.3.1(1) and to required foundations in accordance with Section R602.11.1 (see foundation details).

In addition, floor joists parallel to the top plate shall be toenailed to the top plate with at least 8d nails spaced a maximum of 6" o.c. Top plate laps shall be face-nailed with at least (8) 16d nails on each side

## **STANDARD 4'0" EXTERIOR OR INTERIOR BRACED WALL PANEL (WSP or IWSP) IRC R602.10.4**