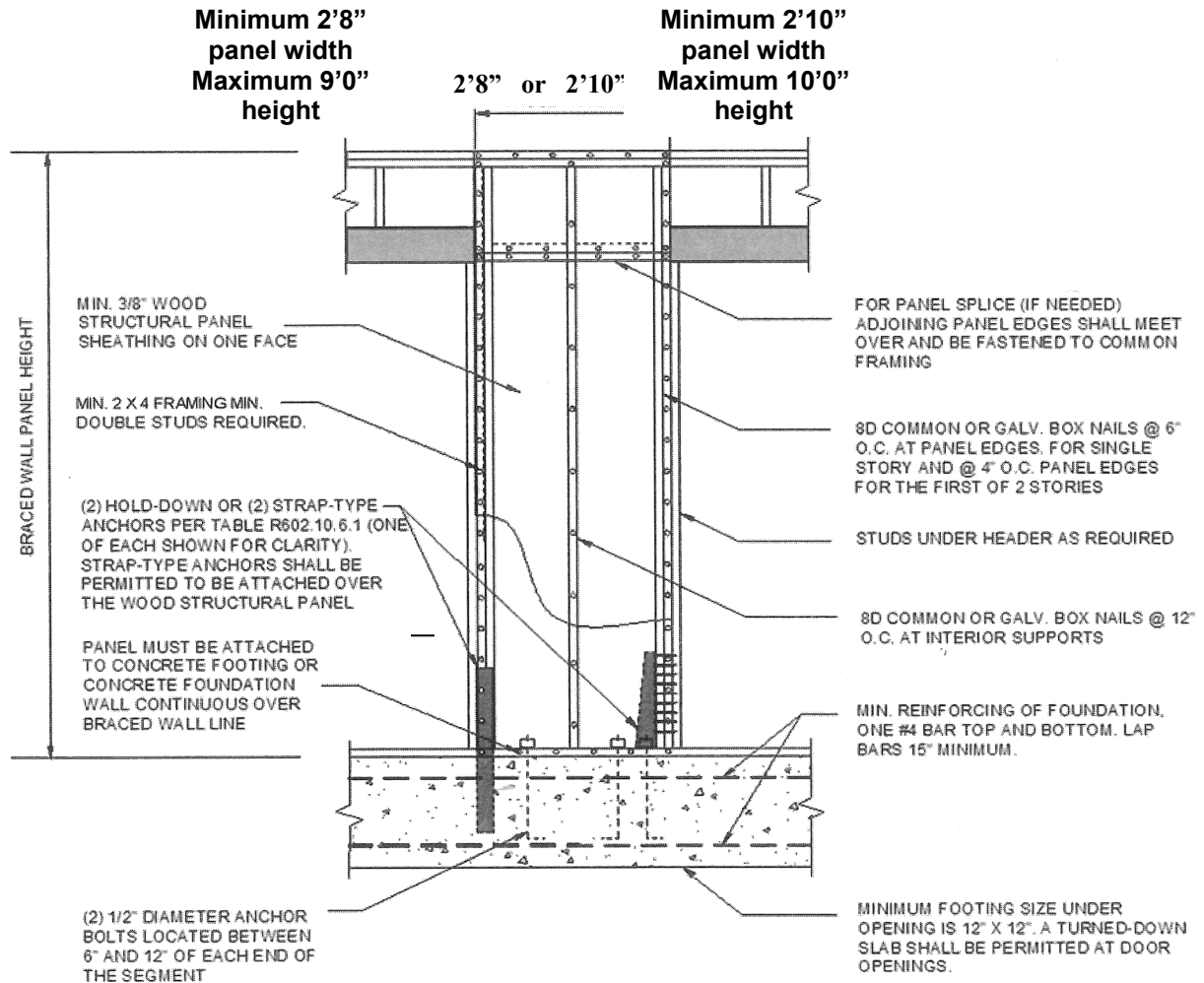




MASON COUNTY
DEPARTMENT OF COMMUNITY SERVICES
Building Division

www.co.mason.wa.us

Mason County Bldg. 8, 615 West Alder Street, Shelton WA 98584



ALTERNATE BRACE WALL PANEL-METHOD ABW
FIGURE R602.10.6.1

All alternate braced panels shall be supported directly on a foundation, continuous across the entire length of the braced wall line.

Minimum footing is 12"x12". A turned down slab shall be permitted at door openings.

The foundation shall be reinforced with not less than one #4 bar top and bottom. Lap bars 15" min.

USE 1800# UPLIFT CAPACITY TIE DOWNS ON SINGLE STORY.

USE 3000# UPLIFT CAPACITY TIE DOWNS ON THE FIRST STORY OF A TWO-STORY STRUCTURE.