



Google Earth Aerial Imagery 1985-2022

Prepared by Luke Viscusi
Planner, Mason County Department of Community Development

Oakland Bay - 12/1985

Legend

-  Chapman Peninsula
-  Proposal Extents



Google Earth

Image Landsat / Copernicus

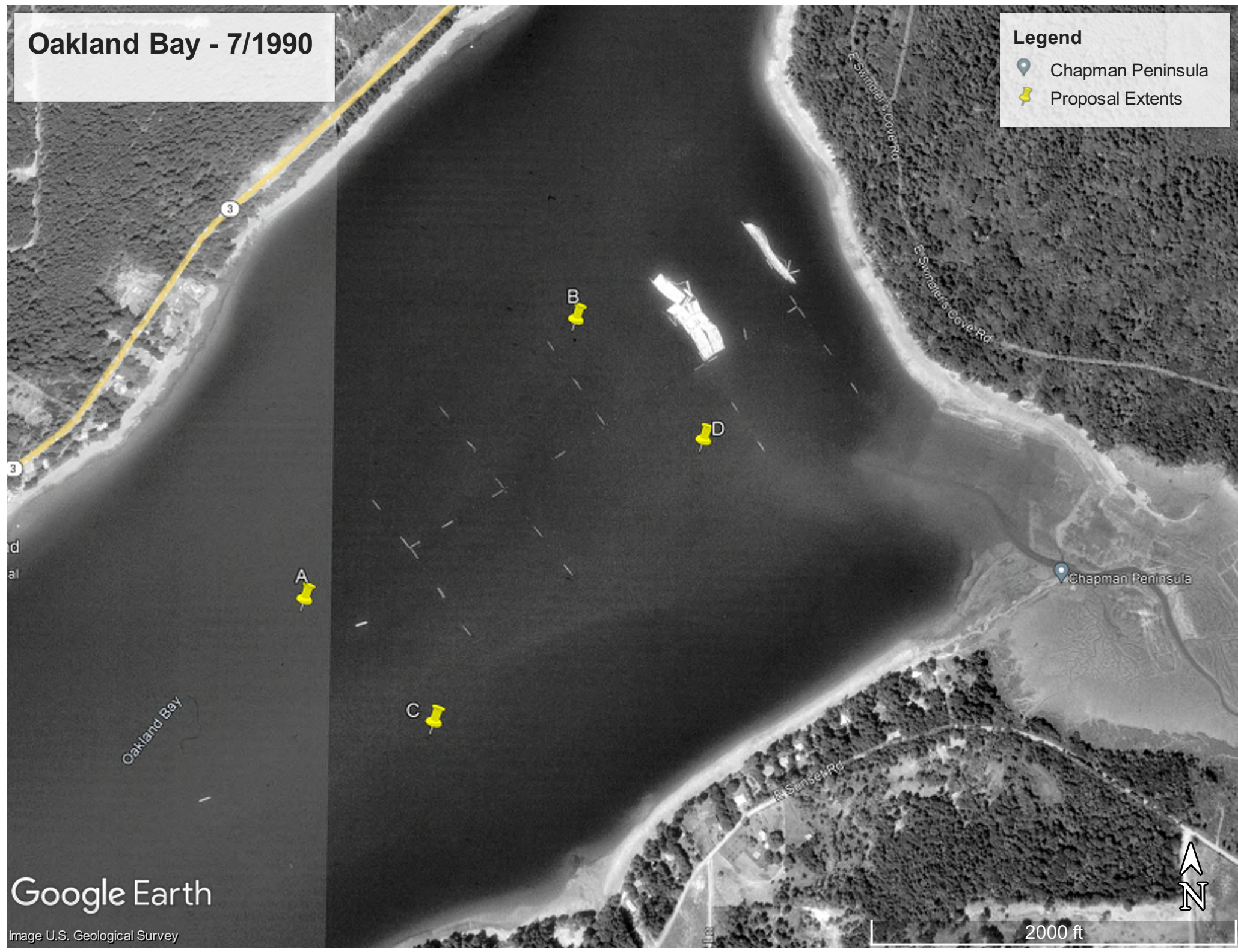
2000 ft



Oakland Bay - 7/1990

Legend

- Chapman Peninsula
- Proposal Extents



Google Earth

Image U.S. Geological Survey

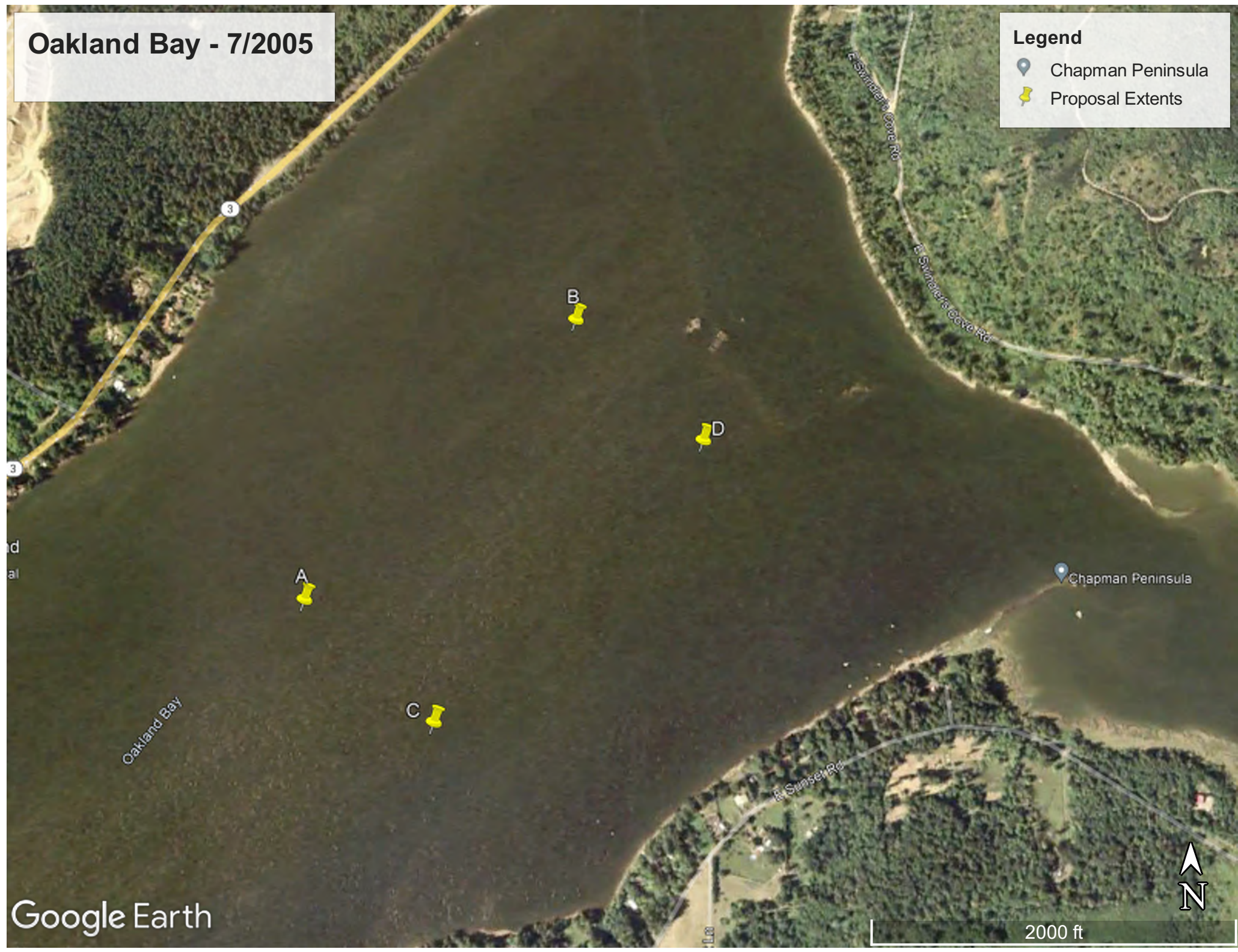
2000 ft



Oakland Bay - 7/2005

Legend

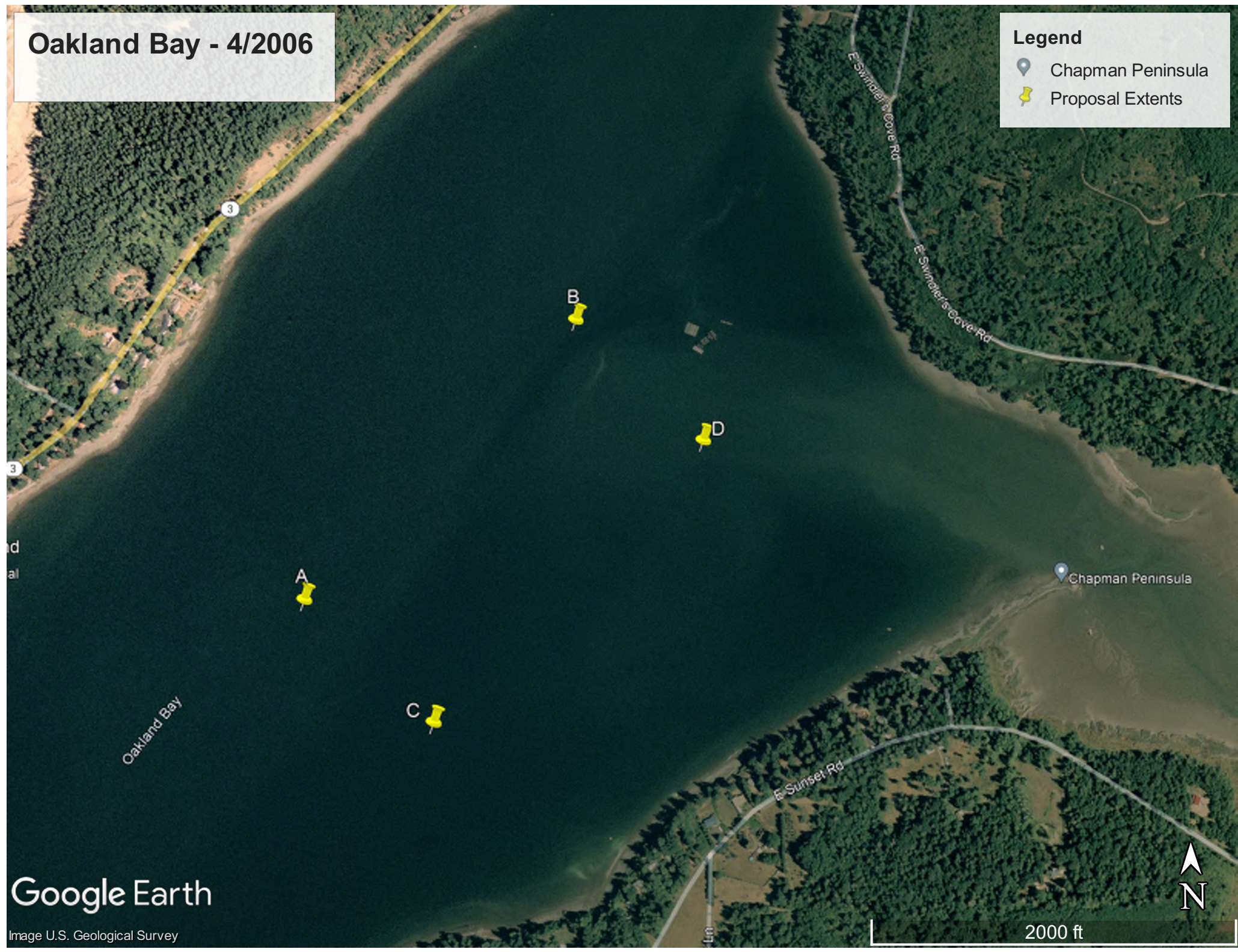
- Chapman Peninsula
- Proposal Extents



Oakland Bay - 4/2006

Legend

- Chapman Peninsula
- Proposal Extents



Google Earth

Image U.S. Geological Survey

2000 ft



Oakland Bay - 5/2009

Legend

- Chapman Peninsula
- Proposal Extents



Google Earth

Image U.S. Geological Survey

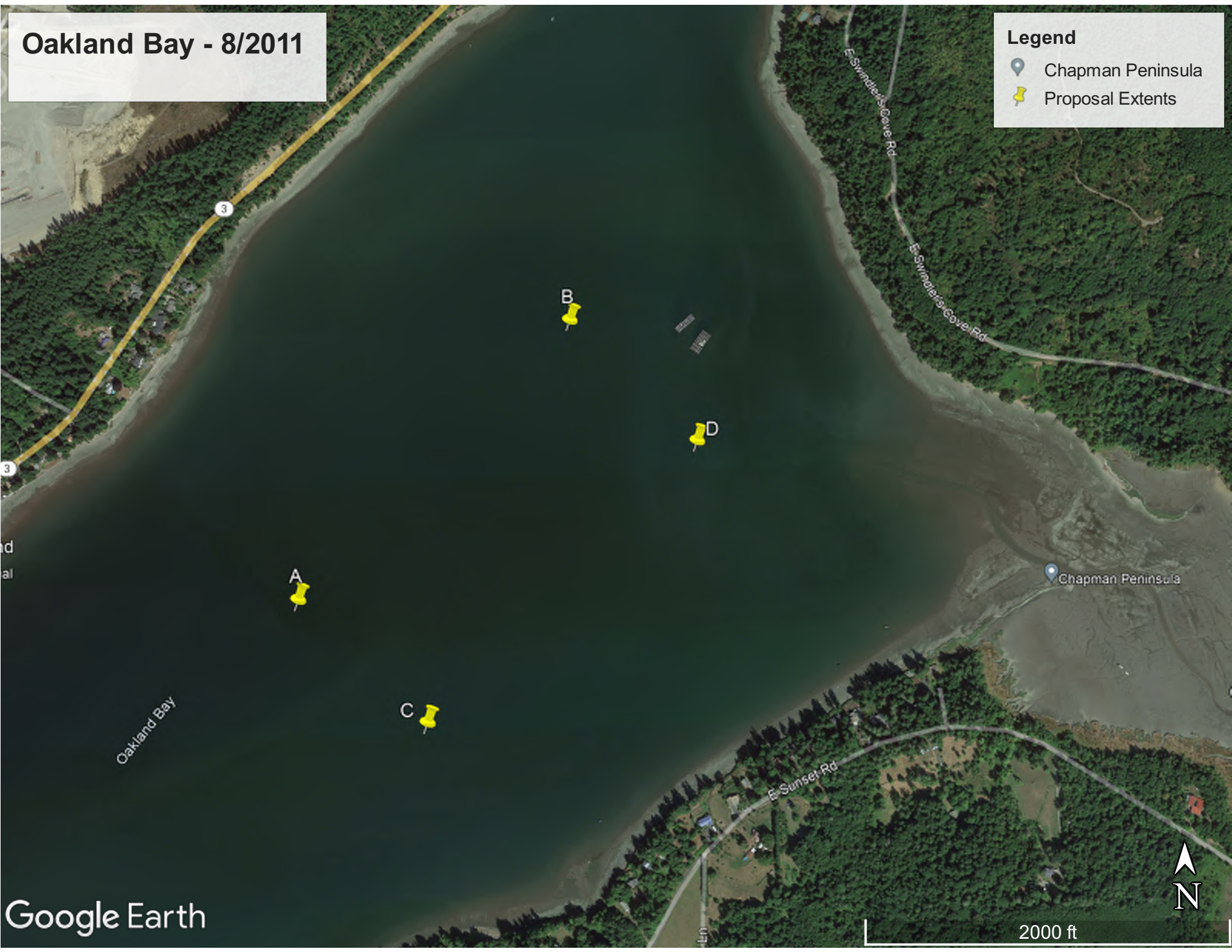
2000 ft



Oakland Bay - 8/2011



Legend

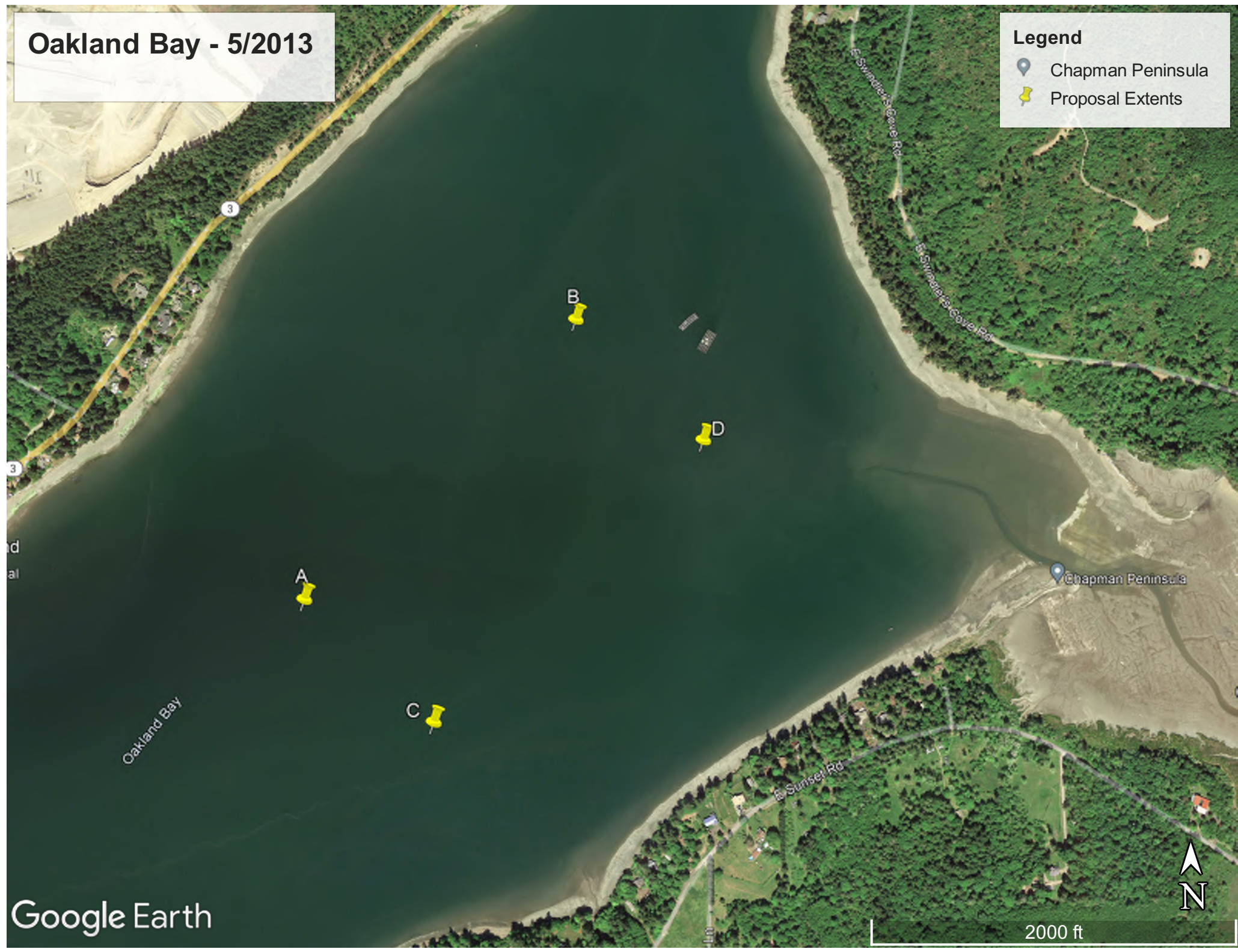
- Chapman Peninsula
- Proposal Extents



Oakland Bay - 5/2013



Legend

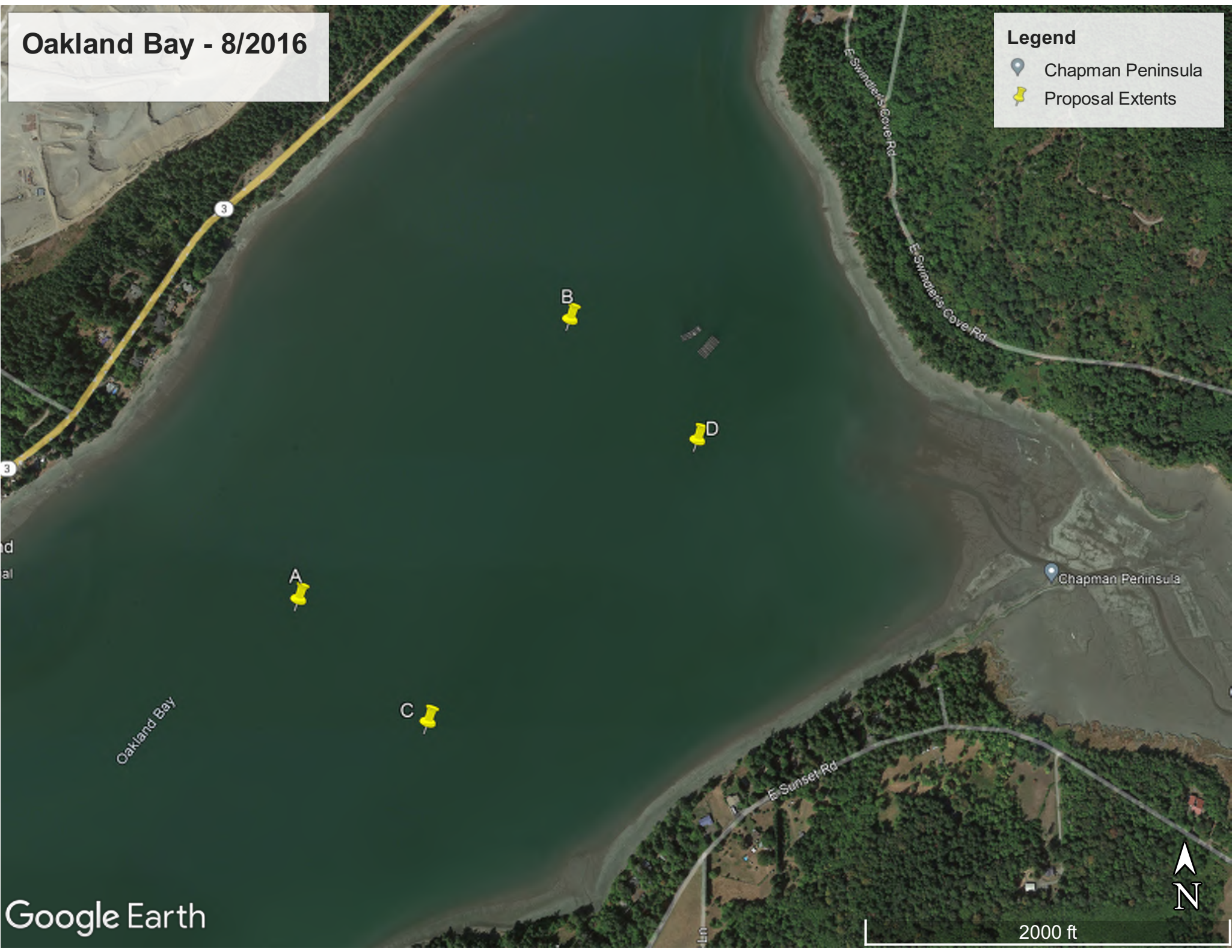
-  Chapman Peninsula
-  Proposal Extents



Oakland Bay - 8/2016

Legend

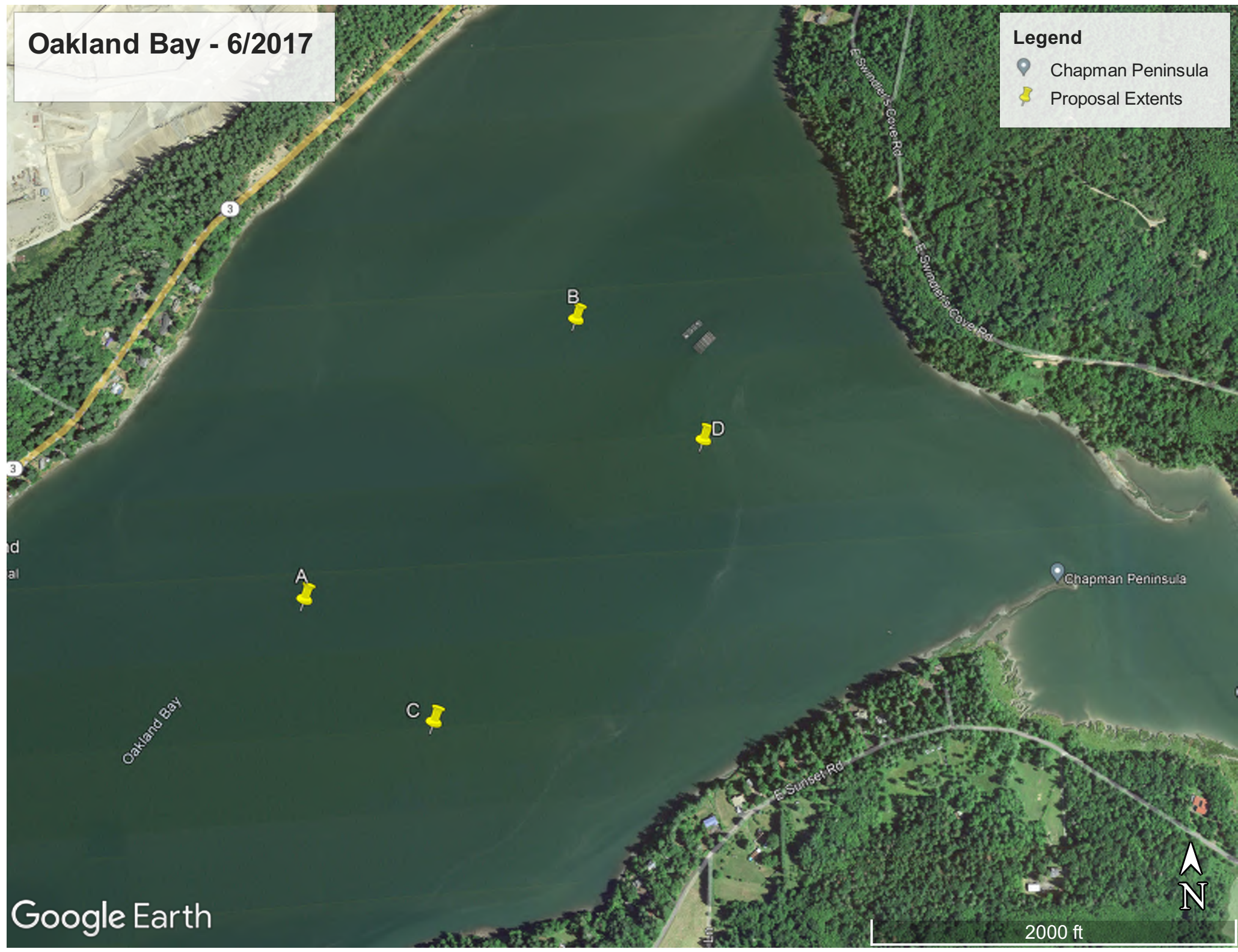
-  Chapman Peninsula
-  Proposal Extents



Oakland Bay - 6/2017

Legend

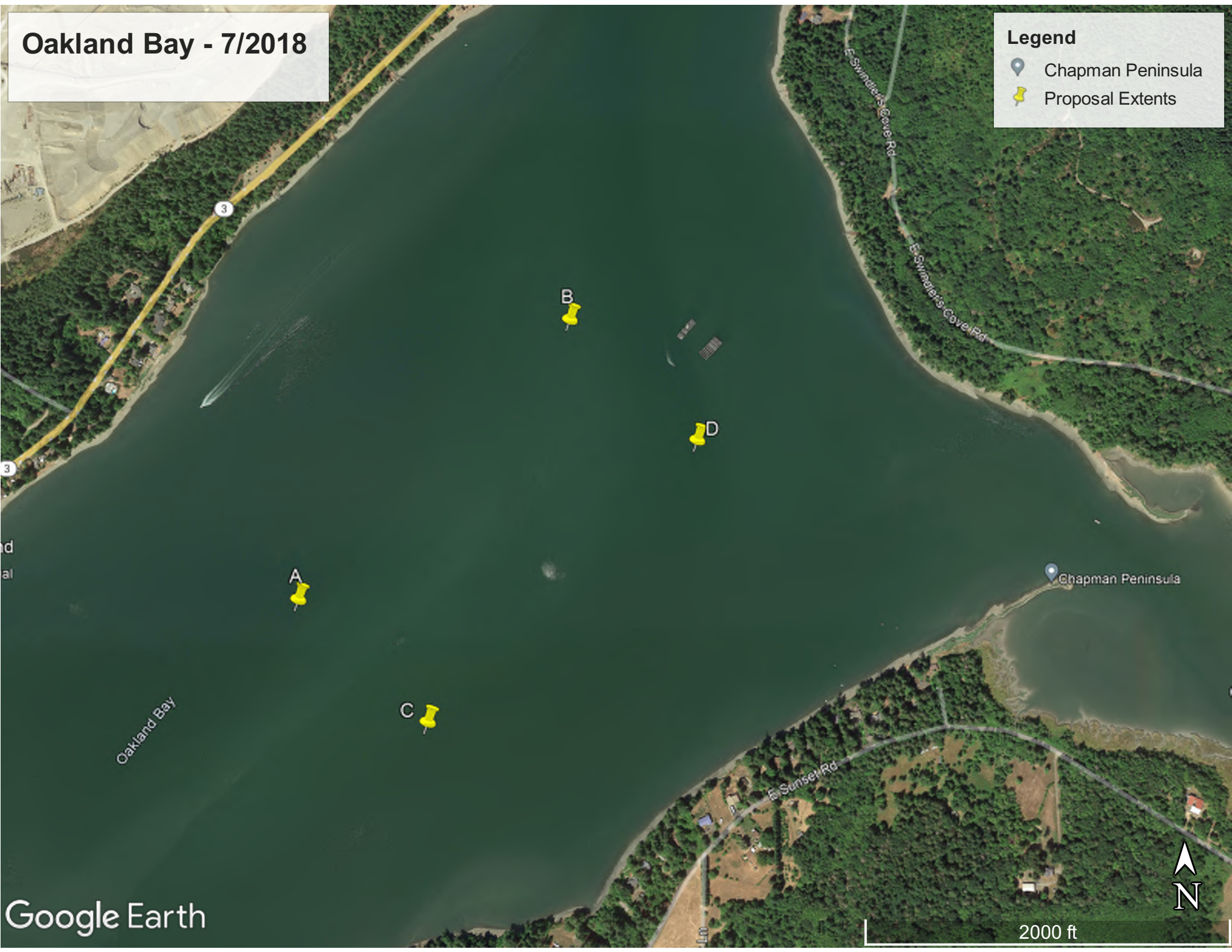
- 📍 Chapman Peninsula
- 📌 Proposal Extents



Oakland Bay - 7/2018



Legend

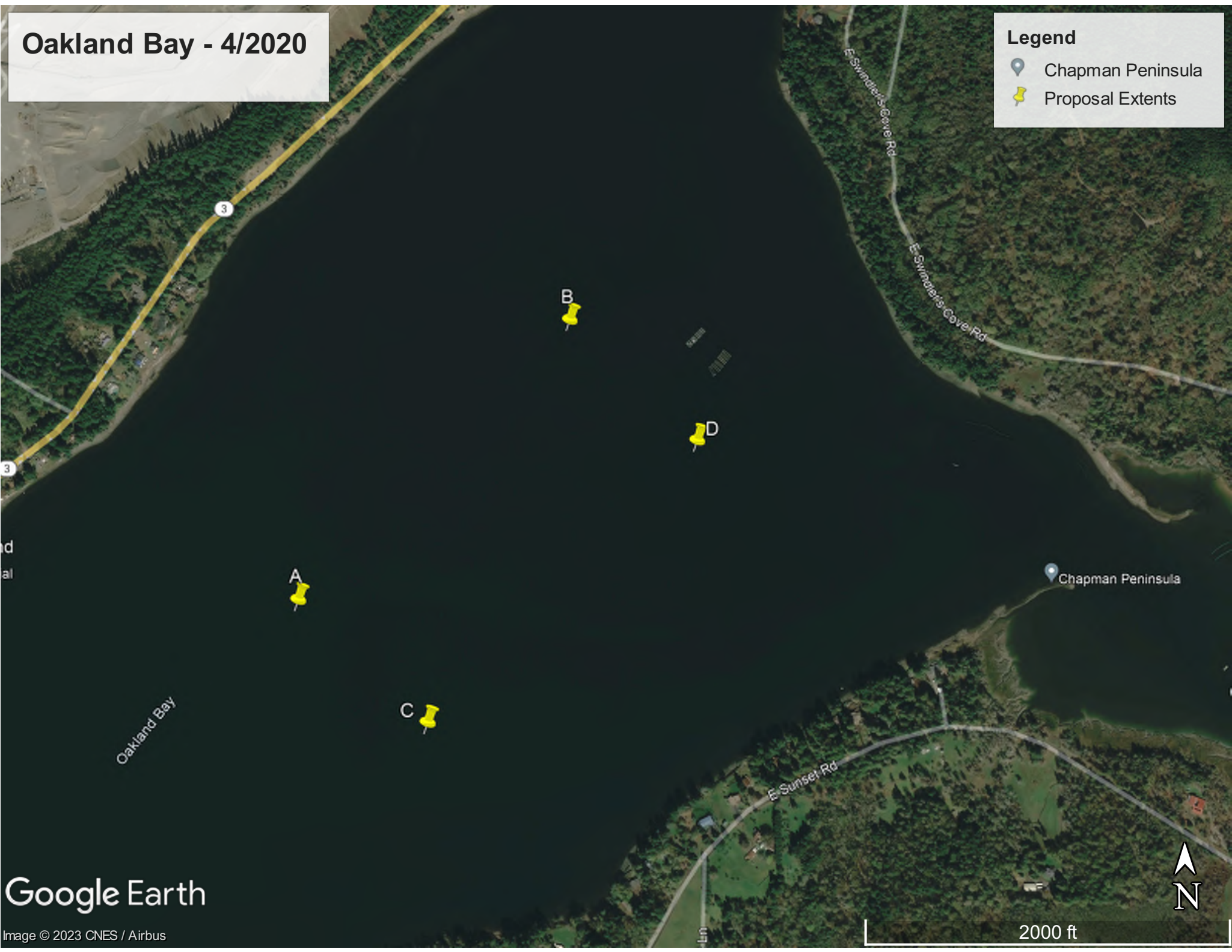
- Chapman Peninsula
- Proposal Extents



Oakland Bay - 4/2020

Legend

-  Chapman Peninsula
-  Proposal Extents



Google Earth

Image © 2023 CNES / Airbus

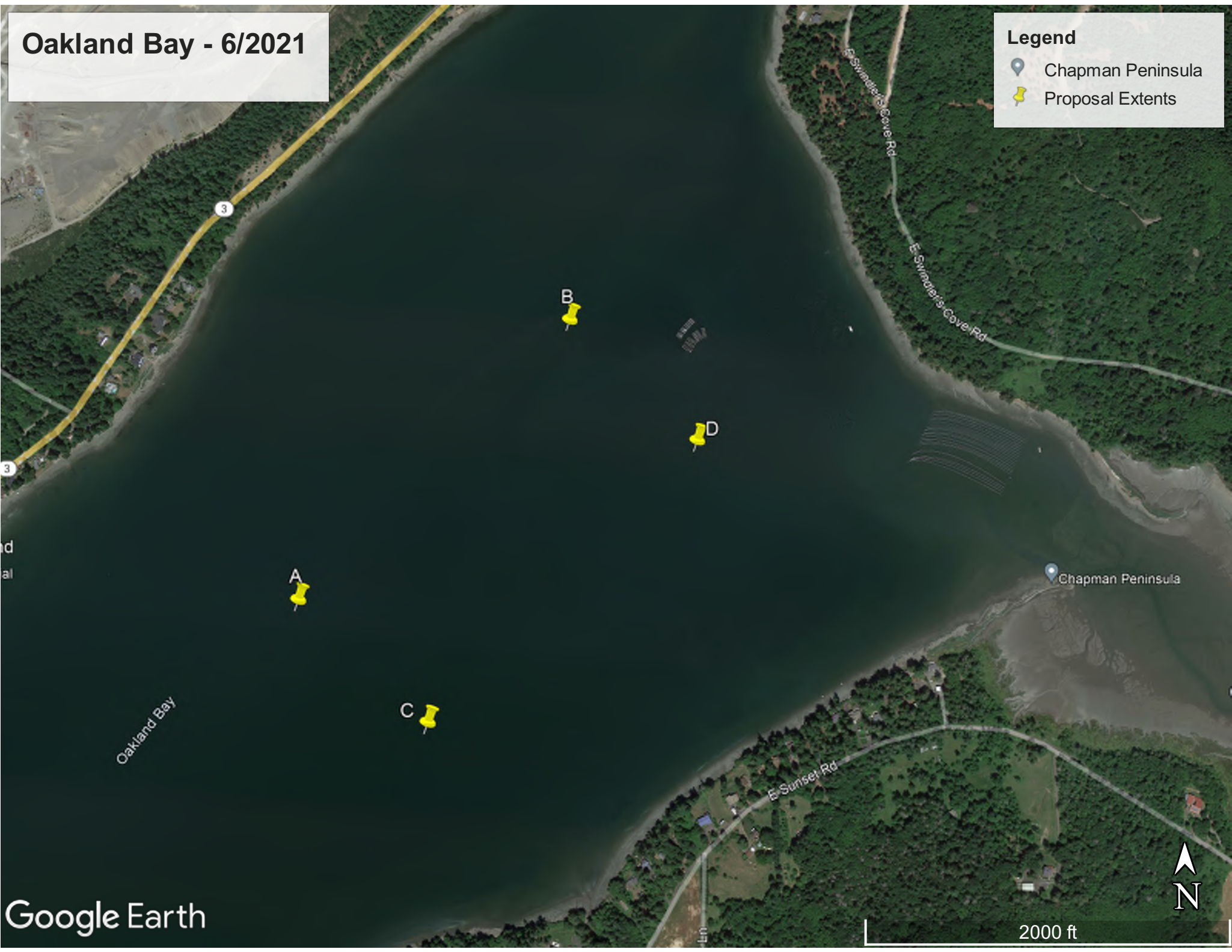
2000 ft



Oakland Bay - 6/2021

Legend

- 📍 Chapman Peninsula
- 📌 Proposal Extents



Oakland Bay - 8/2022

Raft was temporarily out of position due to South anchor attachment breaking. Positions of rafts are normally constant with the views of previous years. Per Ian Child of Sound Shellfish, 05/25/2023 (Exhibit 27).

Legend

- 📍 Chapman Peninsula
- 📌 Proposal Extents

