

SHR2023-00003

EXHIBIT 29

Oakland Bay Proposal at lowest tide captured by Google Earth, taken May of 2009

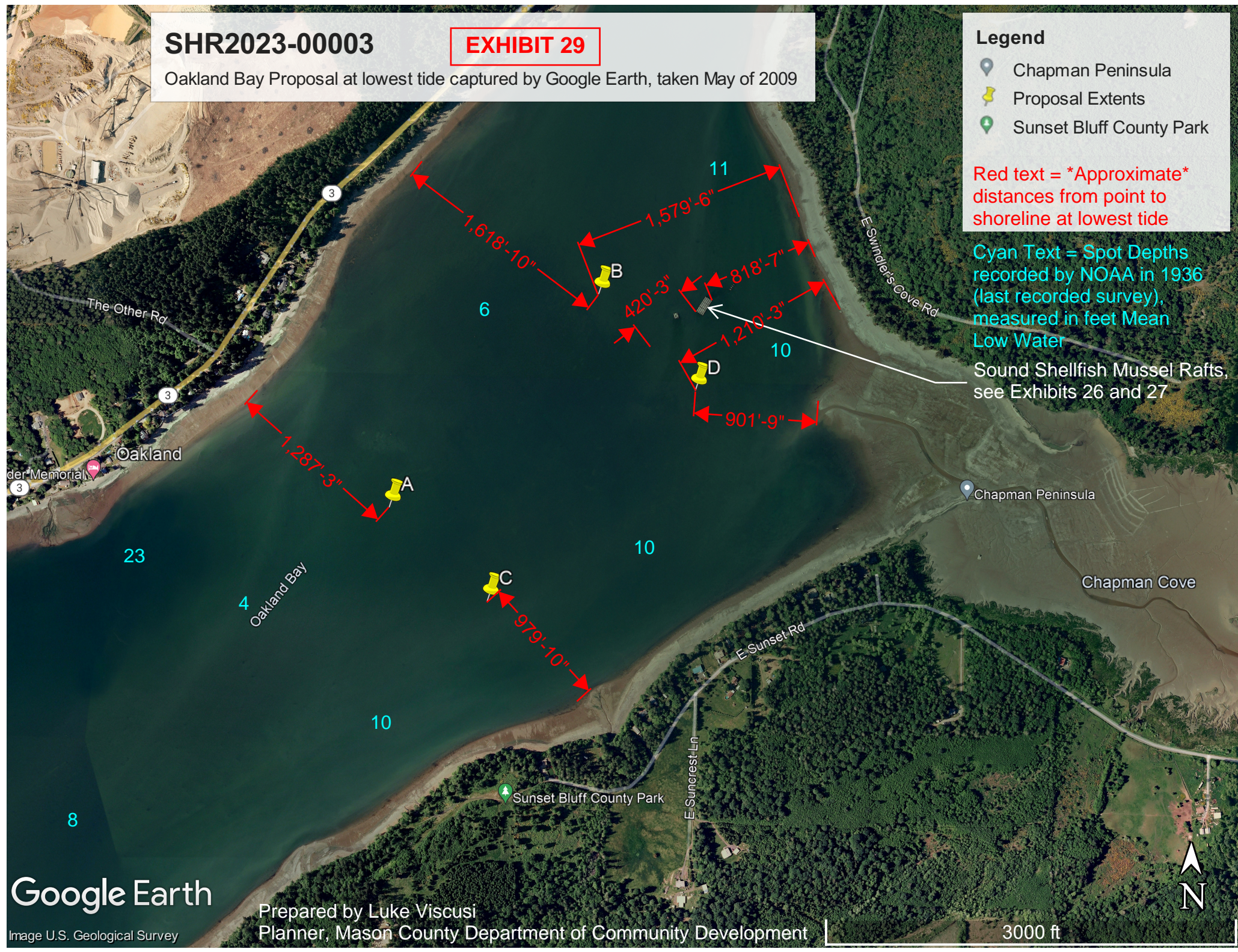
Legend

- Chapman Peninsula
- Proposal Extents
- Sunset Bluff County Park

Red text = *Approximate* distances from point to shoreline at lowest tide

Cyan Text = Spot Depths recorded by NOAA in 1936 (last recorded survey), measured in feet Mean Low Water

Sound Shellfish Mussel Rafts, see Exhibits 26 and 27



Google Earth

Image U.S. Geological Survey

Prepared by Luke Viscusi
Planner, Mason County Department of Community Development

3000 ft