

Oakland Bay *Floating Bag* *Project*

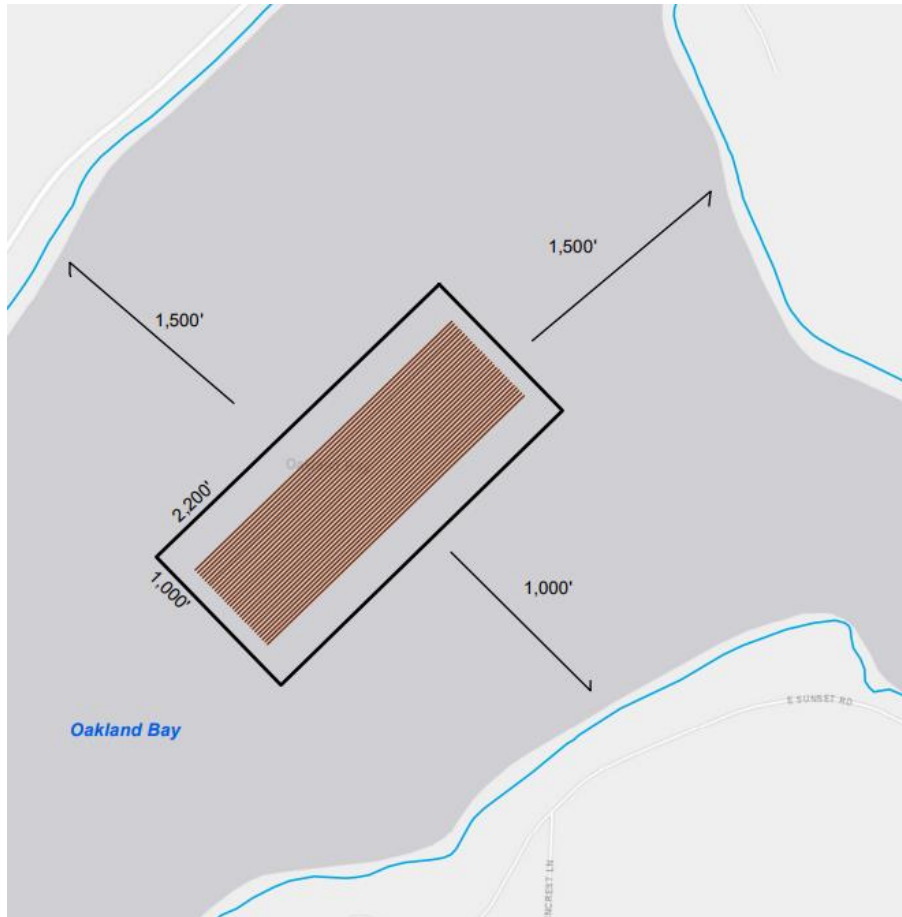
Taylor Shellfish Farms

Continued August 16, 2023

Mason County Hearing Examiner



Farm Details



Farm Type



Figure 3-9. Oyster longline culture, Willapa Bay (Corps site visit 2014).



Figure 3-10. Oyster bag culture, south Puget Sound (NOAA Photo as reported in InsideBainbridge 2015)



Figure 3-11. Oyster rack and bag tumbling system, South Puget Sound (Corps site visit 2013)



Continuing Shellfish Projects in WA

	Number of continuing farms with areas greater than or equal to following acreage		
	9.1	36	50
Washington State	328	178	148
North Puget Sound	31	9	8
South Puget Sound	42	18	15
Hood Canal	19	8	5
Willapa Bay	214	129	109
Grays Harbor	22	14	11
Oakland Bay	5	3	2



Scale

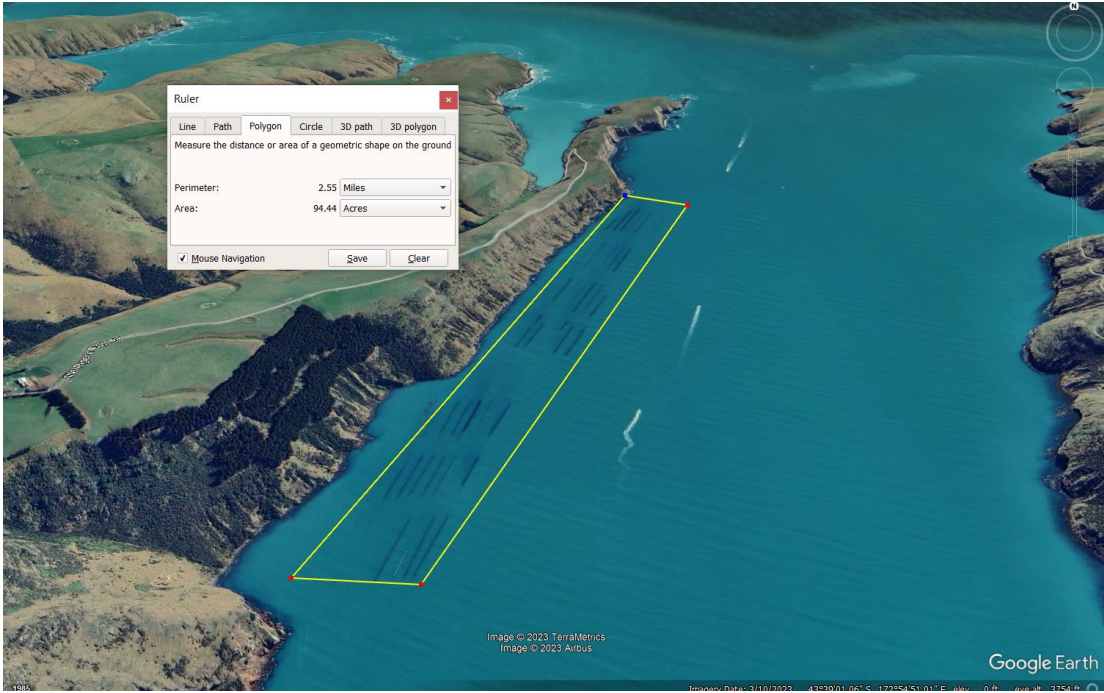


Operations

- Lighting
- Noise
- Odors
- Workers
- Work hours



Aesthetics



International



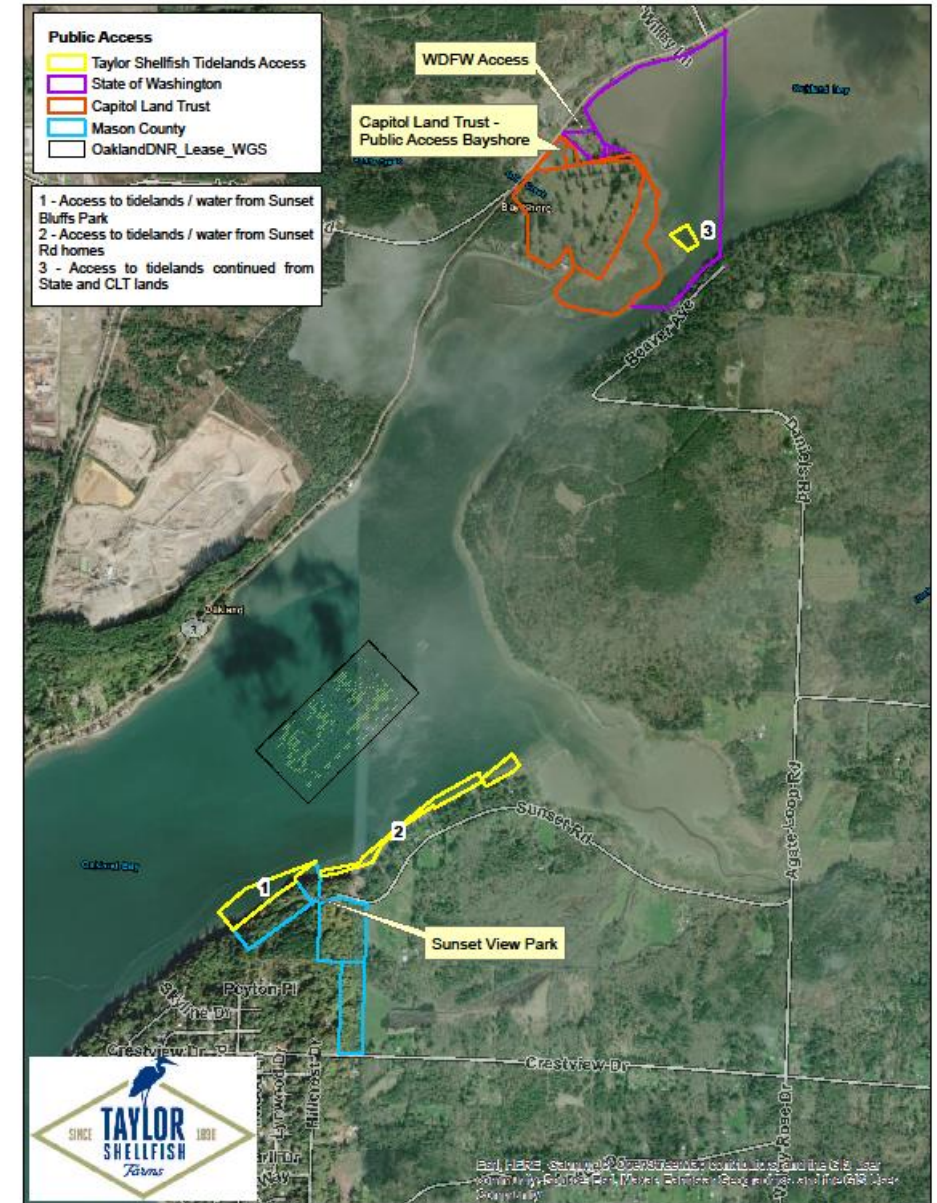
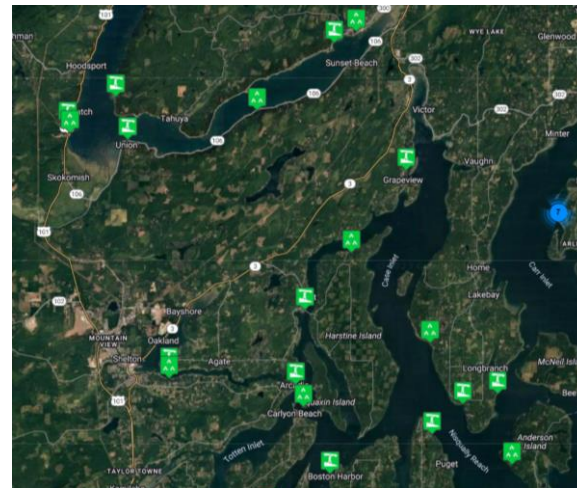
Aesthetics



Navigation & Recreation

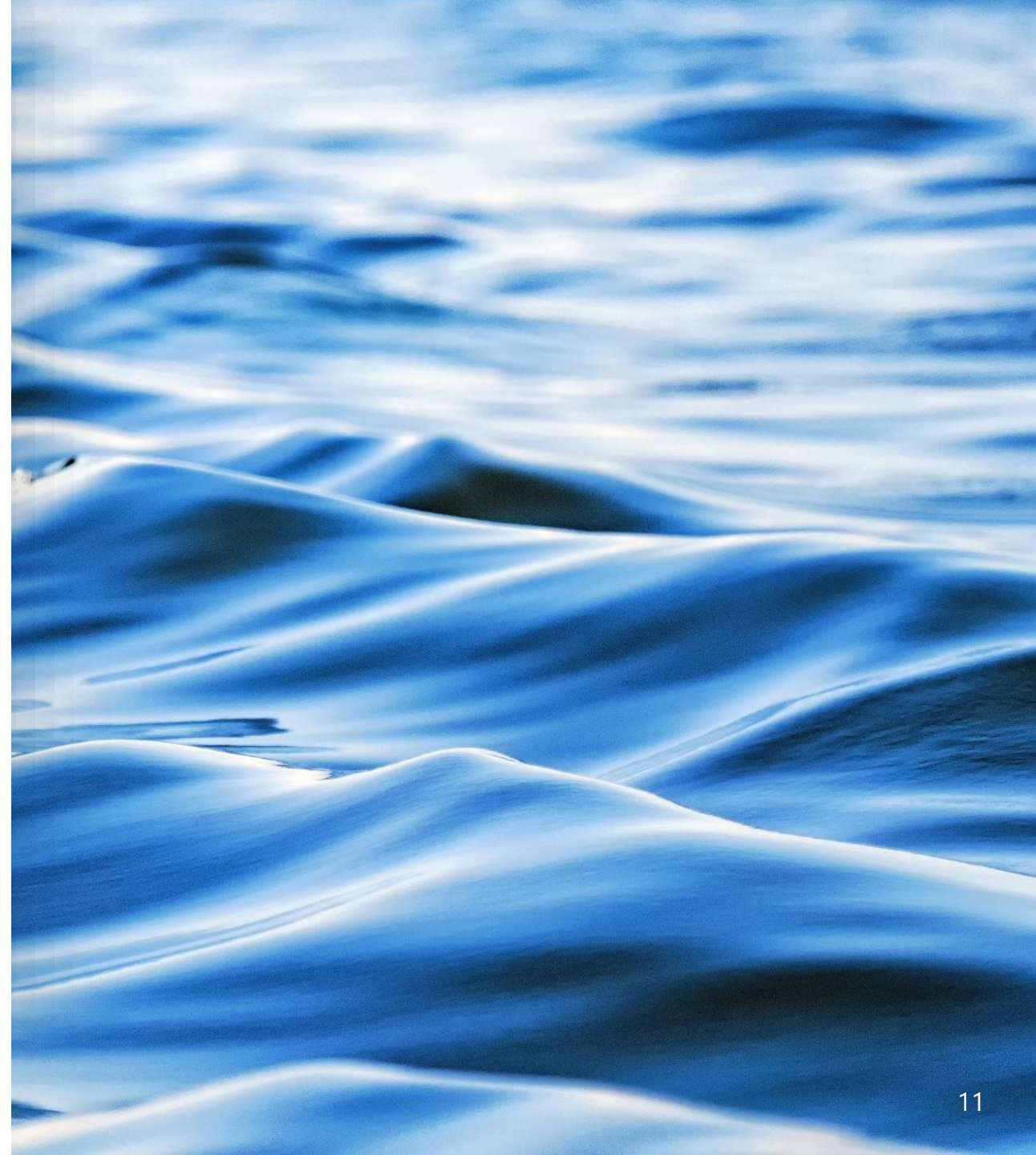


Exploring the beaches for a variety of shellfish like this group at the Oakland Bay Oyster Reserves can be a fun spring time activity for the entire family. (Photo by Shannon Haywood)



DNR Leasing

- Term
- DNR Management Policies
- DNR Aquatic Stewardship Program
- Aquatic Land Enhancement Account
- Monitoring



Shoreline Management

- SMA & SMP
- Oakland Bay
- Federal
 - U.S. Army Corps of Engineers – 33 Conservation Measures
- Industry
 - Environmental Codes of Practice



Economics

- Annual seed sales \$
- Domestic Sales (average)
- International Sales (average)
- Sales taxes paid
- Average farm worker salary + benefits



Operational Support

- Seed Sales
- Hatchery
- Farms
- Processing
- Fabrication and Maintenance
- Drivers
- Restaurant Sales



Monitoring

- Programmatic Consultation
- DNR
- Taylor ECOP



Programmatic Consultation

- Herring Spawn
- Forage Fish
- Vehicle / Vessel Maintenance and Fueling
- Debris Patrols
- Wildlife Interactions



WA DNR

- Anchors
- Project Size and Configuration
- Production



Taylor ECOP

- Healthy Seed
- Gear monitoring
- Visual Impacts
- Pests
- Vessel maintenance and inspection
- Debris patrols





Thank you