

Resolution No. 05-12

Resolution to adopt a revised voting precinct boundary plan

Whereas, on August 9, 2011, the County Commissioners adopted a new voting precinct boundary plan reducing the number of precincts from 57 to 37, and;

Whereas, the Washington State Redistricting Committee has adopted a Congressional District Plan that moves a portion of Mason County from Congressional District 6 to Congressional District 10, and;

Whereas, RCW 29A.16.050(1) directs that no precinct may be divided by a Congressional District and two of the 37 precincts were divided by the new Congressional line, and;

NOW, THEREFORE, BE IT HERBY RESOLVED: That the Mason County Board of County Commissioners hereby approve and adopt the revised plan adding two voting precincts to bring Mason County's voting precincts into compliance with RCW 29A.16.050(1) as set forth in Exhibit "A" attached hereto.

Approved this 17th day of January 2012.

Mason County Board of Commissioners

Lynda Ring Erickson

Lynda Ring Erickson, Chair

Steve Bloomfield

Steve Bloomfield, Commissioner

Tim Sheldon

Tim Sheldon, Commissioner

Attest:

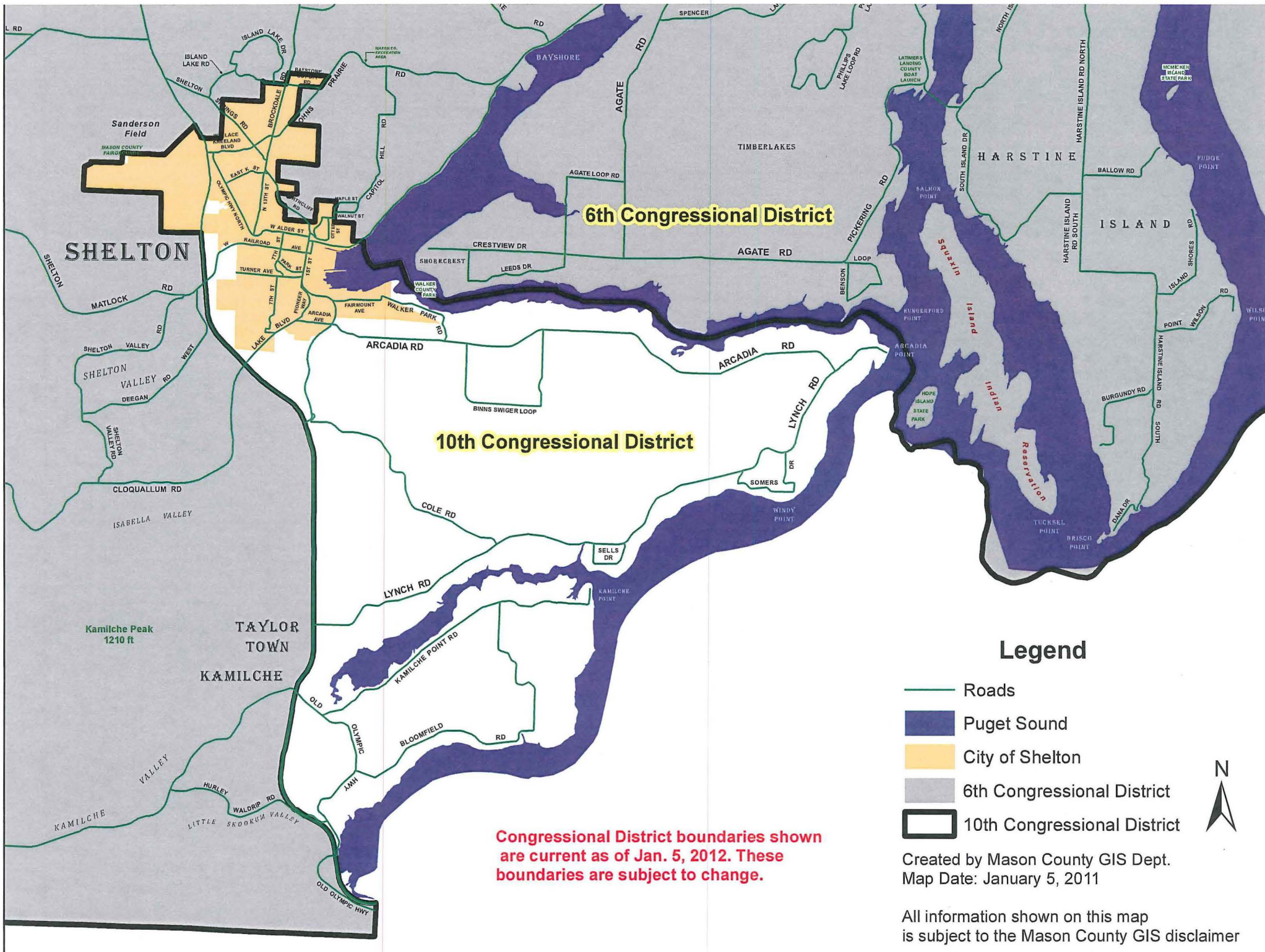
Shannon Goudy

Shannon Goudy, Clerk of the Board

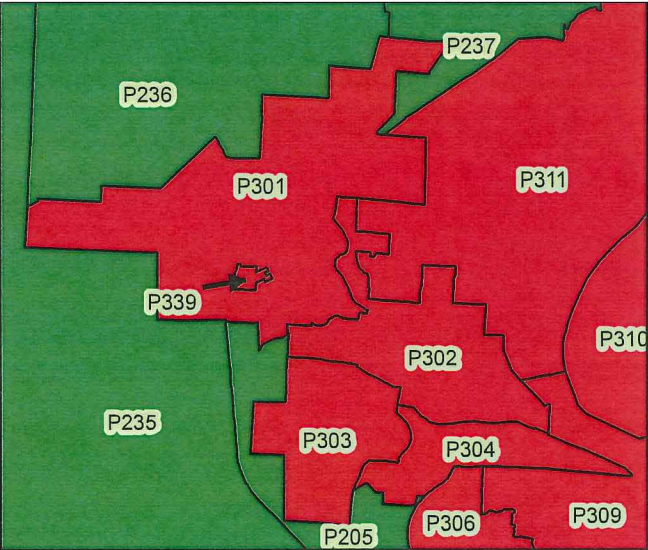
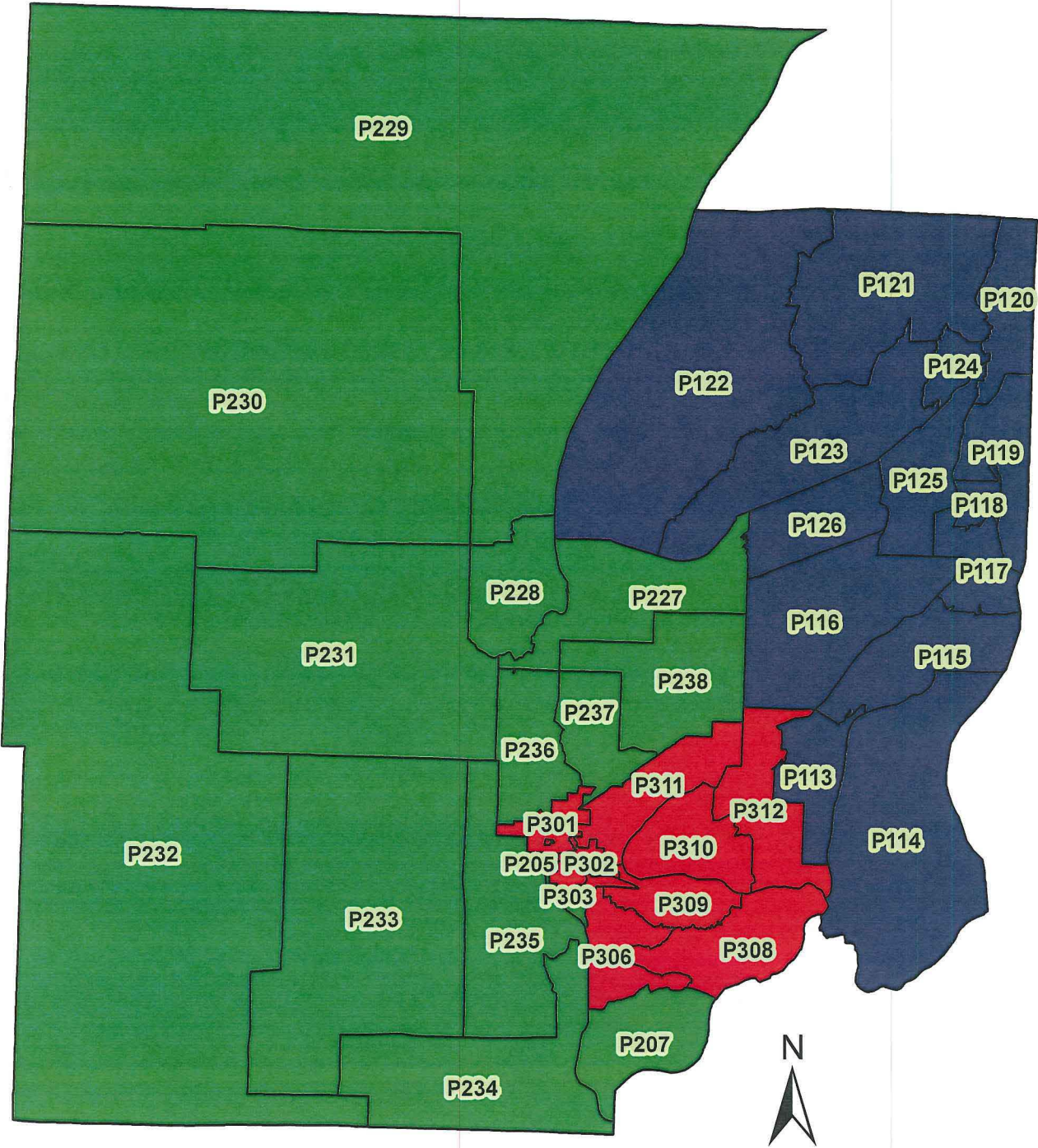
Approved as to form:

Tim Whitehead #37821

Tim Whitehead, Chief Deputy Prosecuting Attorney



Possible Option



Legend

- District 1
- District 2
- District 3

Commissioner District Populations

District 1 20,279
 District 2 20,218
 District 3 20,209

Created by Mason County GIS Dept.
 Map Date: January 5, 2011

All information shown on this map