

Resolution No. 07-16

A Resolution Creating a Shellfish Protection District in McLane Cove of Pickering Passage

WHEREAS, Washington State Department of Health, Office of Environmental Health and Safety, by Final Order issued on July 1, 2015, downgraded the commercial shellfish area classification of a portion of McLane Cove from "Approved" to "Conditionally Approved" (Attachment A);

WHEREAS, Chapter 90.72 RCW requires, by law, any County with tidelands within such boundaries of those affected areas identified in such a 'Final Order' to establish a shellfish protection district and to establish a Shellfish Protection District program with elements intended to improve water quality in such shellfish tidelands by decreasing, and if possible, eliminating nonpoint pollution from stormwater runoff, malfunctioning onsite septic sewage systems, animal pollution not adhering to best management practices and other activities that jeopardize and threaten water quality, and

WHEREAS, Chapter 90.72 requires this County's legislative authority, being subject to the 'Final Order' issued by the Washington State Department of Health, Office of Environmental Health and Safety, to comply with such an order to create such a shellfish protection district when a downgrade of classification occurs; and

WHEREAS, this County's legislative authority intends to comply fully with the 'Final Order' issued on July 1, 2015 by the State of Washington Department of Health, Office of Environmental Health and Safety; and

WHEREAS, this County's legislative authority also realizes water quality degradation of the marine tidelands and fresh waters of Mason County continues to threaten the public's health and safety and other beneficial uses of these waters for agriculture, fish and wildlife protection and recreation, and

WHEREAS, this County's legislative authority further recognizes maintaining the highest levels of water quality is paramount to sustaining the livelihood of Mason County, this Puget Sound region, and to the greater environment; and

WHEREAS, this County's legislative authority wishes to be an active participant in helping to work towards curing the problems facing water quality in the area;

WHEREAS, this County's legislative authority has established the boundary of the Shellfish Protection District based upon the best available scientific information and data identifying any and all possible related sources and areas of origin of all possible nonpoint pollution effecting the water quality of the area as identified in the 'Final Order' issued on July 1, 2015 by the State of Washington Department of Health, Office of Environmental Health and Safety; and

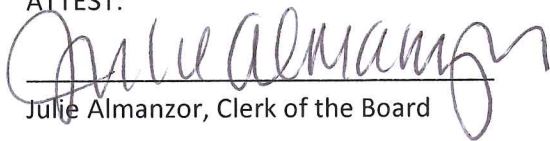
NOW, THEREFORE, BE IT RESOLVED that a shellfish protection district shall be established encompassing the area within the boundaries shown on "Attachment B".

Resolution No. 07-16

PASSED this 9<sup>th</sup> day of February 2016

BOARD OF MASON COUNTY COMMISSIONERS


ATTEST:


  
Julie Almanzor, Clerk of the Board

  
Terri Jefferys, Chair

APPROVED AS TO FORM:

  
Tim Whitehead, Deputy Prosecuting Attorney

  
Tim Sheldon, Commissioner

  
Randy Neatherlin, Commissioner



STATE OF WASHINGTON  
DEPARTMENT OF HEALTH

OFFICE of ENVIRONMENTAL HEALTH and SAFETY

243 Israel Road SE • PO Box 47824 • Olympia, Washington 98504-7824  
(360) 236-3330 • TDD Relay Service: 1-800-525-0127 (TDD/TTY 711)

July 1, 2015

Debbie Riley, Environmental Health Director  
Mason County Department of Health Services  
Post Office Box 1666  
Shelton, Washington 98584

Dear Ms. Riley:

Our office is reclassifying 31 acres of the Pickering Passage (McLane Cove) commercial shellfish growing area in Mason County from *Approved* to *Conditionally Approved*. This change in classification was prompted by the results of a comprehensive review of pollution conditions and marine water quality data. We anticipate that the reclassification will be finalized by August 5, 2015.

This review concludes that Marine Water Station 57 fails the National Shellfish Sanitation Program water quality standards for an *Approved* classification. Based on our evaluation of marine water data, we have determined that this portion of Pickering Passage (McLane Cove) meets the standards for a *Conditionally Approved* classification. The area will be closed to commercial shellfish harvest for five days after a 0.75-inch or greater rainfall in 24-hours as recorded at Taylor United FLUPSY gage.

The area being reclassified is identified by boundary lines in Figure 3 of the enclosed Sanitary Survey report.

If you have any questions, please contact Jean Snyder at (360) 236-3349.

Sincerely,

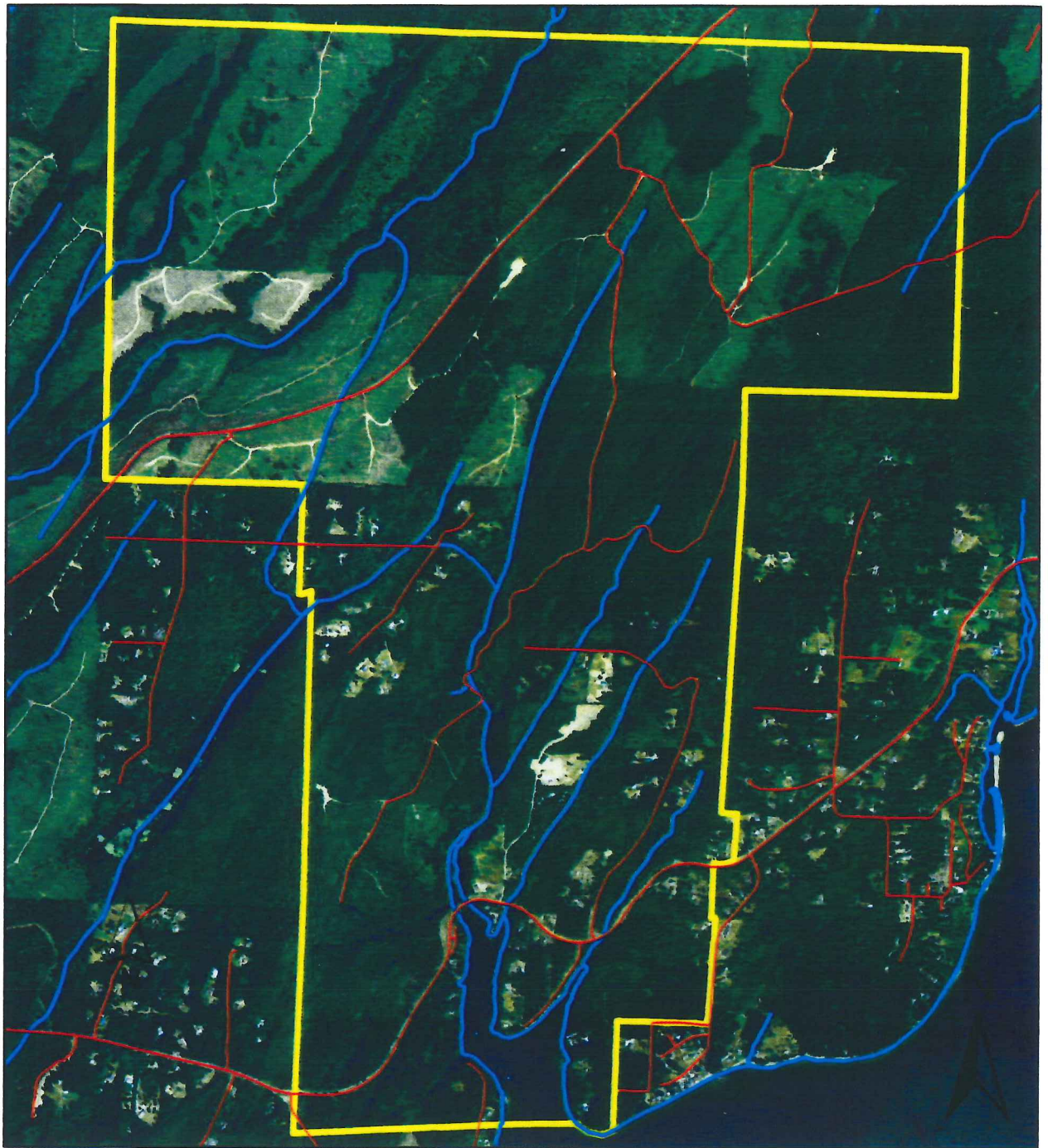
A handwritten signature in black ink, appearing to read "Jerrod Davis".

Jerrod Davis, P.E.  
Office Director

Enclosure



# McLane Cove Shellfish Protection District



## Legend

- Stream
- Shellfish Protection District Boundary
- Road